

SALEM SOUND

(use chart 13275)

COLREGS DEMARCATION LINE
80.120c (see note A)

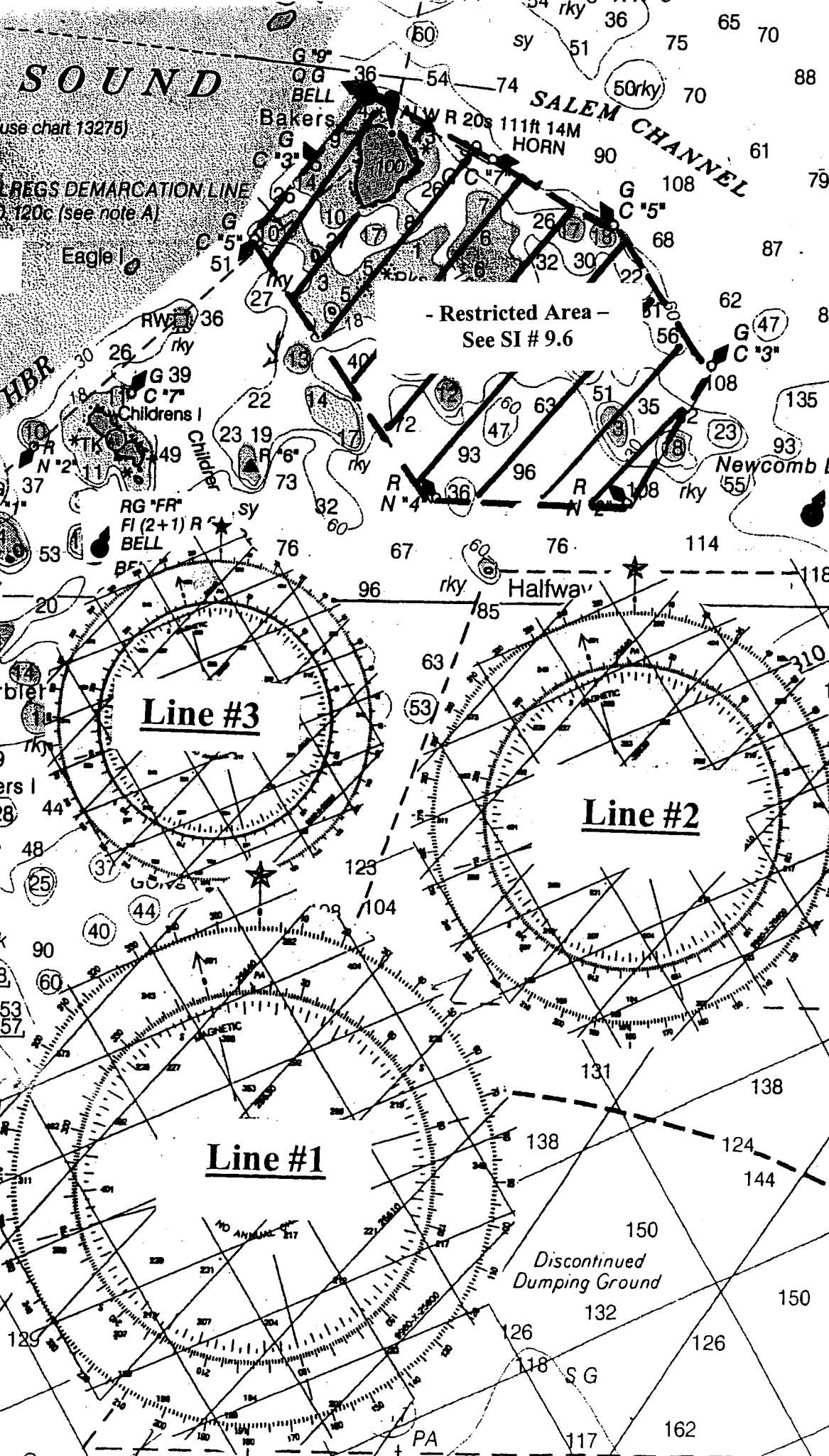
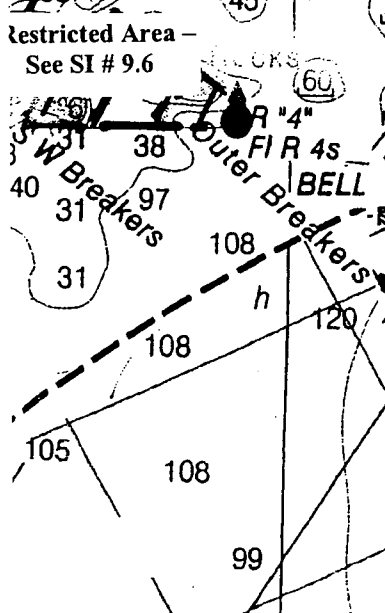
See Chart #13275

- Restricted Area -
See SI # 9.6

Line #3

Line #2

Line #1



2010 PHRF NEW ENGLAND CHAMPIONSHIP

CAUTION – CHART NOT INTENDED FOR NAVIGATION

Note: The magnetic bearing and distance information to the center of each racing area on this chart has been referenced from Marblehead Channel Bell “FR”.

Line #1

Corinthian Yacht Club

Center of racing area is 180 degrees M / 3.2 NM from Bell “FR”

Lat: 42-27.160 North

Long: 070-47.864 West

VHF-FM Channel 71

Orange Tetrahedrons

Circle Diameter – 2.4 NM

Line #2

Boston Yacht Club

Center of racing area is 130 degrees M / 2.9 NM from Bell “FR”

Lat: 42-29.043 North

Long: 070-45.467 West

VHF-FM Channel 72

Red Tetrahedrons

Circle Diameter – 2.0 NM

Line #3

Eastern Yacht Club

Center of racing area is 160 degrees M / 1.0 NM from Bell “FR”

Lat: 42-28.432 North

Long: 070-48.250 West

VHF-FM Channel 78

Yellow Tetrahedrons

Circle Diameter – 1.6 NM